



How do we scale ?

PROVIDING

- ✓ **AFFORDABLE**
- ✓ **RELIABLE**
- ✓ **ACCESSIBLE**
- ✓ **PAY-AS-YOU-GO**
- ✓ **SOLAR SOLUTIONS**





Power Pack with long-lasting Lithium battery

22" TV
T2/S2
tuner

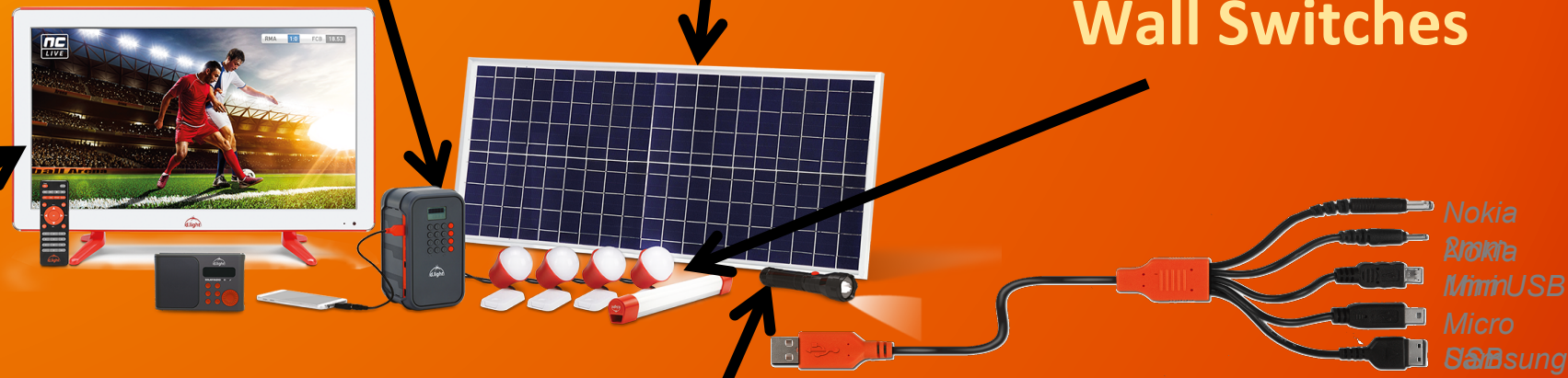
Rechargeable Radio with
MP3 playback

40W Solar Panel
with 6m cable

1 tube light & 4
fixed lamps with
Wall Switches

Rechargeable
Torch

USB Charger with 5
Adaptors





**LEARNING
ENHANCED
&
ENABLED**



**RENEWABLE
ENERGY
SOLUTION**



IMPROVED HEALTH

IMPROVING LIVES & EMPOWERING INDIVIDUALS



REDUCED CO2 EMISSIONS



**AFFORDABLE PAYG OPTION
LONG TERM SAVINGS**



**INCREASE IN
PRODUCTIVE
HOURS**



Search...



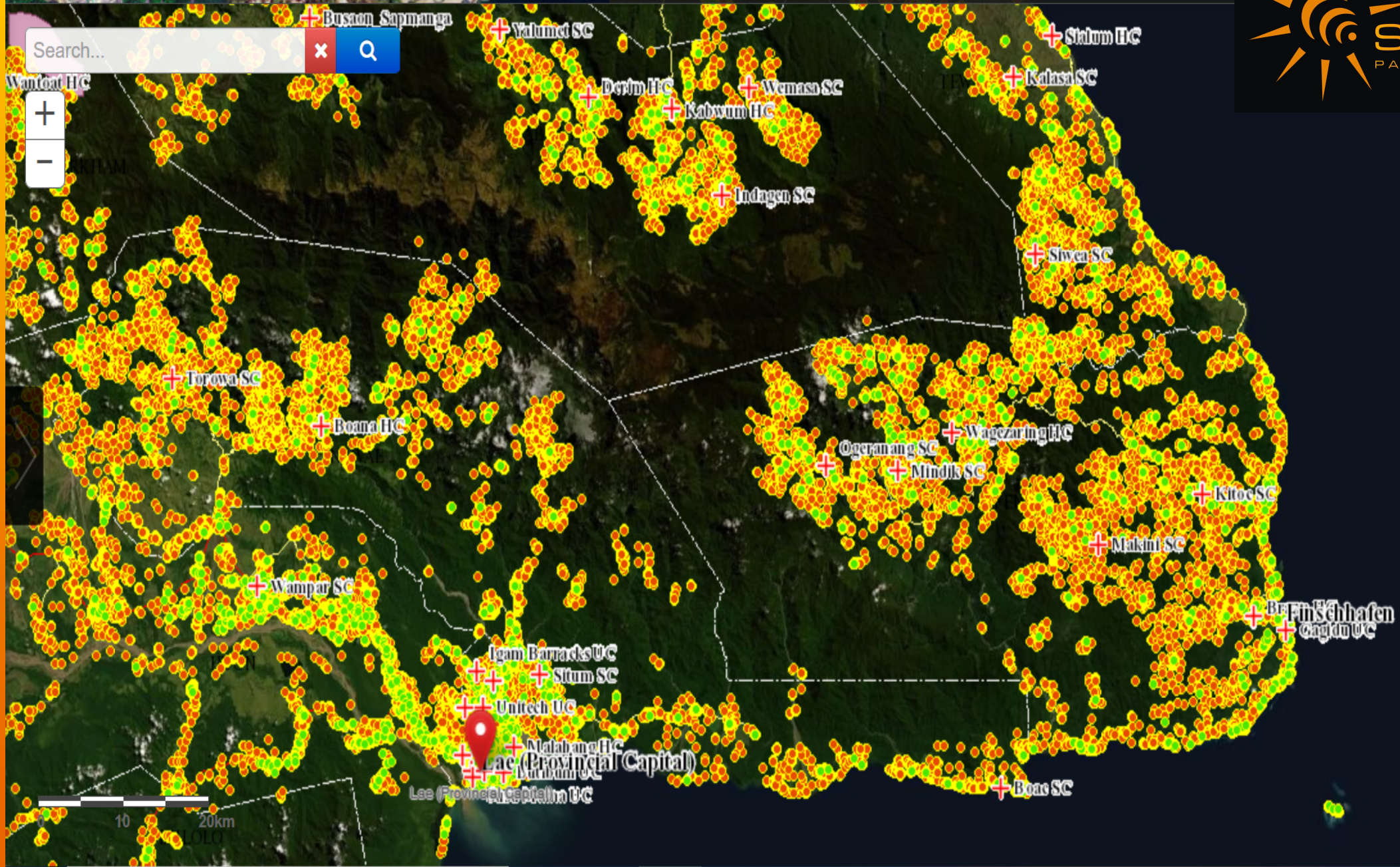
Eastern Highlands

Morobe

Lae (Provincial Capital)

West New Britain

0 15 30km







House Summary



There are **19,044** houses in your defined region.

Close

+ Turawa SC

+ Boana UC

+ Wampar SC

+ Igom Barracks UC

+ Sium SC

+ United UC

+ Malabang UC

+ Lae (Provincial Capital)

+ Lae (Provincial Capital) UC

+ Ogeranang SC

+ Mindik SC

+ Wagezuring HC

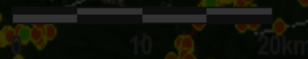
+ Kitoc SC

+ Makini SC

+ Bui Schhafen

+ Chagun UC

+ Boas SC





Achieving Scale

- Cash handling
- Commission Only Sales
- Lack of Mobile money
- Setting up repair centres near customers
- Distribution centres

**Solving these goes a
long way ...**



Radio & TV

- next to no coverage outside a major town
- FM Radio depends on line-of-sight
- TV is almost non-existent

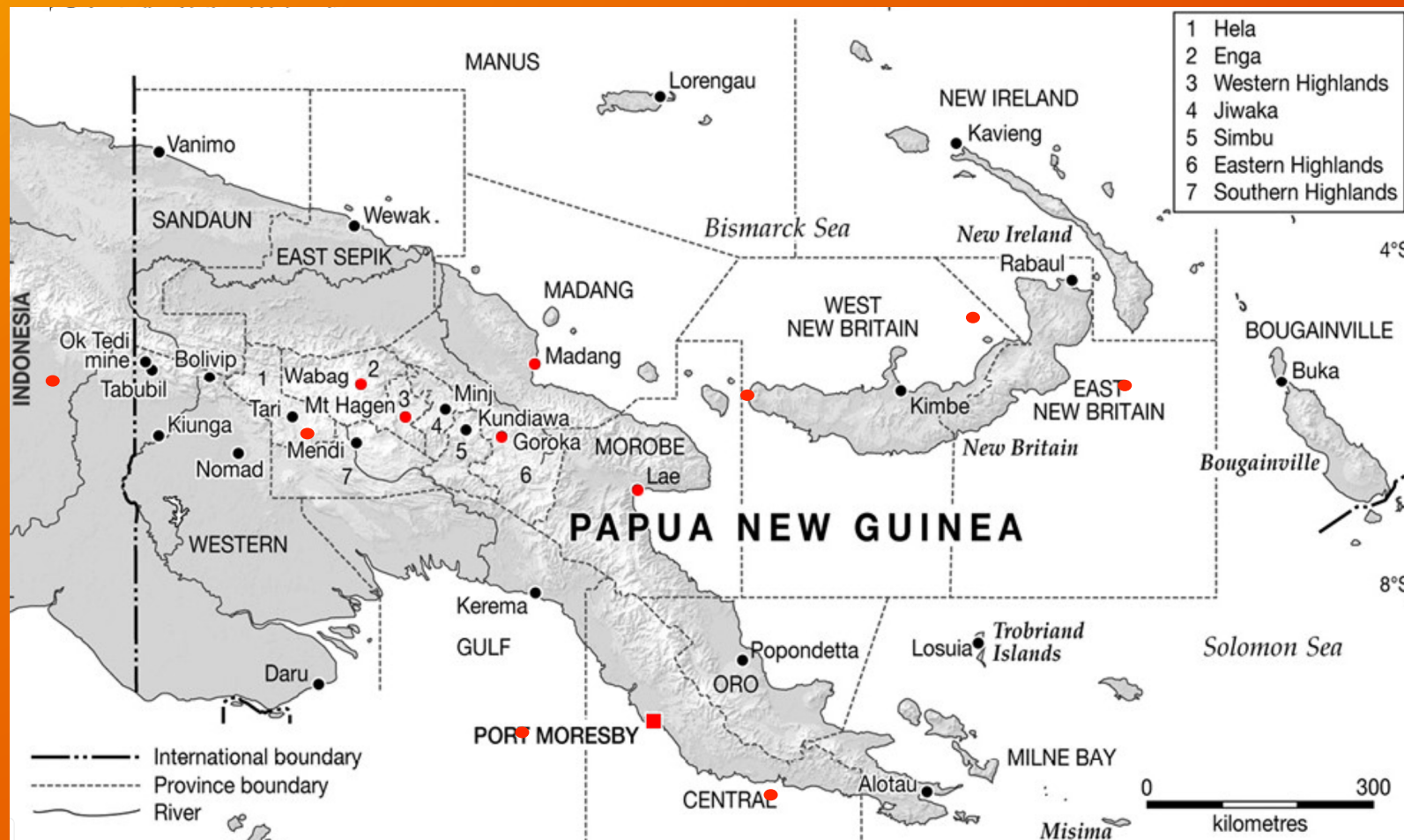


Rural Electrification

- The solution cannot be to wait 9 years for a grid connection !
- Combination of Home Systems
- Trialling mini-grids in towns with existing poles & wires



SERVING CUSTOMERS ACROSS PNG





Sola PayGo
PAY AS YOU GO SOLAR



Sola PayGo
PAY AS YOU GO SOLAR

Switch to solar with the



D34 solar system

- ✓ Easy to install.
- ✓ Expected battery life +5 years.
- ✓ 4 bright lights with wall switches.
- ✓ 2 light settings: 5 hours high and 17 hours low.
- ✓ 2 Year warranty.
- ✓ Solar charged FM radio & MP3 playback.
- ✓ Mobile phone charger.
- ✓ Optional rechargeable torch.